



THE COMPANY PROFILE

YEAR: 2026

Tube Trading & Projects (Pty) Ltd
Trading as
TTP Technologies

Reg No: 2024/051262/07

Table of **Contents**

| | |
|---|----|
| About Company | 01 |
| Mission Statement - Vision | 02 |
| Core Values | 03 |
| Our Summary Services | 04 |
| Consulting, Maintenance, Projects Services | 05 |
| Security Technology Assessment Services | 06 |
| Our Product (SSASS) | 07 |
| Our Product (SSASS) | 08 |
| Our Product (iSafe) | 09 |
| Our Product (iSafe) | 10 |
| Our Product (iSafe) | 11 |
| Security Screening Products | 12 |
| Designs & Products | 13 |
| Company Compliance | 14 |
| Clients, Partners & Suppliers | 15 |
| Track Record | 16 |
| Contacts | 17 |

About **Company**

Tabé Trading and Projects trading as TTP Technologies, is a company registered in South Africa. It is owned and controlled by well experienced director namely Obakeng Tabé. TTP Technologies is a vibrant service provider with brilliant innovative solutions for the public and private institutional client, with an obligation to enhance service delivery and maximise value in accurately monitoring and maintaining its projects.

It is a reputable Engineering and Technology Design, Security Systems, Supply, Install, Commission and Maintenance company. With a commitment to excellence, integrity and personalized service.

TTP Technologies is a unique empowerment company, endowed with the collective depth of management skills, technical knowledge and experience in various fields of expertise such as CCTV Surveillance, Access Control, Mobile APPs, X-Ray, Electrical Energy, Solar/Power backup, Electric fencing, Pepper spray & Community Safety system.

Our target market includes government, private sectors, small businesses, corporations, partnerships, nonprofits and more. We have extensive experience working with clients across various industries, including but not limited to Municipalities, Rail SOE and various Government departments.





”



Mission Statement

At Tube Trading & Projects our mission is to drive technological advancement through engineering excellence. We are dedicated to designing, developing, and delivering cutting edge innovative solutions that redefine industries and enhance lives. With a relentless commitment to quality, sustainability, and innovation, we strive to be the catalyst for positive change in the world. And to be the premier supply and delivery firm, delivering exceptional service and value to our clients nationwide. We are dedicated to efficiently sourcing, managing, and delivering goods, ensuring reliability and timeliness at every step. Committed to exceeding expectations, we leverage innovation, technology, and a customer-centric approach to streamline supply chains and drive sustainable growth for our partners and communities

Vision

Our vision is to be at the forefront of engineering and technology, inspiring a world where possibilities are limitless. We envision a future where our groundbreaking solutions propel industries forward, revolutionize daily life, and address society's most pressing challenges. With a relentless pursuit of excellence and a commitment to sustainability, we aim to shape a brighter tomorrow where technology enriches lives, empowers communities, and creates a lasting legacy of progress.

Core Values



Innovation Excellence: We uphold a steadfast commitment to innovation as the cornerstone of our company. We embrace curiosity, creativity, and continuous learning to push the boundaries of what's possible. By fostering an environment that encourages bold ideas and experimentation, we strive to pioneer groundbreaking solutions that redefine industries, solve complex challenges, and positively impact the nation.

Reliability and Integrity: At the heart of our supply and delivery firm lies an unwavering commitment to reliability and integrity. We prioritize trustworthiness, transparency, and accountability in all our interactions. By consistently delivering on our promises and maintaining the highest ethical standards, we build enduring partnerships with our clients, suppliers, and communities. Our dedication to reliability and integrity ensures that every delivery is executed with precision, consistency, and the utmost respect for our stakeholders.

Client-Centricity: Putting the needs of our clients first, understanding their unique challenges and goals, and providing tailored solutions and proactive guidance to help them succeed.

Teamwork: Fostering a collaborative and supportive work environment where every team member is valued, empowered, and encouraged to contribute their expertise and ideas towards shared goals. Community

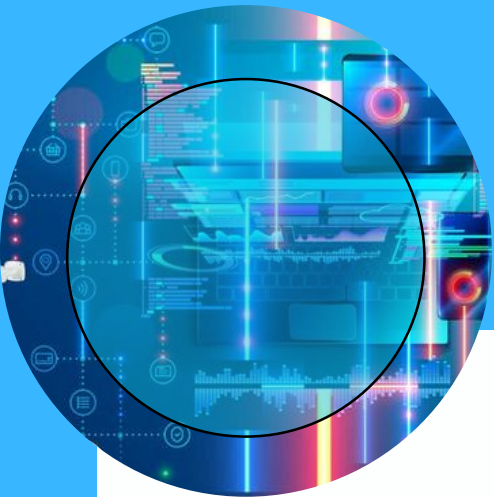
Engagement: Giving back to the community by volunteering our time, resources, and expertise to support local organizations, initiatives, and causes that make a positive impact

Theft & Vandalism: Intend to eradicate theft and vandalism of client assets such as cables, batteries, personnel in all various client infrastructures such as border fences, railway line, farms, production plants, substations, min-substations, workshops, office/business buildings, pump stations, network towers e.t.c

Training: Skill transfer is our priority in all projects for our client staff members with OEM certification.



Our **Summary Services**



Engineering and technology design

: Our services in engineering and technology designs involves collaborating closely with clients to conceptualize, design, and develop innovative products tailored to their specific needs and objectives. The company's team of engineers, designers, and technologists utilize their expertise and advanced tools to bring ideas to life and transform concepts into tangible, market-ready products.



Security Solution

In Security, we provides a range of security solutions to protect individuals, businesses, and assets from various threats and risks. The company's primary focus is on delivering tailored security services that address specific security concerns and requirements of their clients. In short, we customise solutions based on challenges experienced.



SICM

In supply, install, commission & maintain, the service involves managing the end-to-end process of sourcing, transporting, and delivering goods from suppliers to customers, install, commission and carry out maintenance duties ensuring timely and cost-effective fulfilment of orders. The company's primary focus is on optimizing supply chain operations to meet customer demands while minimizing costs and maximizing efficiency.

Consultant services:

Security Technology Solutions

1. Tender document analysis
2. Site needs analysis
3. Security solution design (all design reviews inclusive)
4. Financial budget proposal
5. Technical/technology proposal
6. Project Management services

Maintenance

1. Inspection & Assessment
2. Cleaning & Basic Upkeep
3. Preventive Maintenance (Hardware & Software)
4. Repairs & Replacements
5. System Testing & Performance Checks
6. Final Quality Check & Documentation
7. Maintenance Schedule Report



Project Installation services

1. Detailed Scope of work per discipline
2. Accurate Project timelines
3. Detailed site feasibility study
4. Project installation (On site)
5. Control Room Installation (Server, Storage, Video Wall, Cabling, Operator Consoles/Workstations)
6. System Configuration (NVR & VMS Platform)
7. Installation punching and rectification
8. Project Commissioning
9. Final handover





Consultant services:

Security Technology Assessments

1. Background challenges analysis/study
2. Site inspections (Detailed site feasibility study for all sites)
3. Security solution design per discipline:
 - CCTV & Access Control
 - Electrical & Power/solar backup
 - Network
 - Perimeter protection
 - Pepper spray
 - Fire/gas detection
 - Alarm system
4. Scope of work per discipline
5. Bill of materials per discipline
6. Project implementation plan & timelines
7. BID description draft
8. Company/Service provider requirements
9. Skills, Qualifications and Experience required
10. BID Evaluation:
 - Qualitative technical scoring criteria
 - Practical evaluation scoring criteria
11. Mandatory /Functional Criteria
12. SLA drafts per contractor per discipline
13. Bill of material
14. Financial budget proposal

Our Product (SSASS)



CCTV



As an authorised system integrator of Dahua Technologies, we offer a wide portfolio of security-related products, ranging from IPC, NVR, HDCVI cameras, PTZ cameras, thermal cameras, Access Control, Video Intercom, Alarms, Mobile & Traffic products, display & control, VMS and so on. At TTP Projects, we use closed-circuit television cameras to monitor and record video footage for client asset and infrastructure, typically for security purposes. We interface the CCTV camera to our own product SSICS (Smart Security Integrating Controller System) to ensure full integration of all security device are on one VMS platform

Access Control

We install and maintain biometric, facial recognition & card reader for clients as per request. We offer access control system to clients to controls the movement of users through access points at critical access point. This will ensure that everyone entering and exiting the infrastructure uniquely identifies themselves.



Perimeter Fence Detection



TTP Projects offers project architectural design, installation, configuration and commission of perimeter protection system with the use thermal cameras with human detection algorithm. We customize solutions based on the client background challenges, perimeter fence distance, sufficient lighting, vegetation and underground services. We interface the thermal cameras to our own product SSICS (Smart Security Integrating Controller System) to ensure full integration of all security device are on one VMS platform.

The PA System

The public address system is a deterrent tool to warn the intruder prior theft and vandalism occur. This allows the operator controller to be able to talk from control room via the IP speaker. We do installation, installation, VMS (video management system) configuration and commission of the PA system.



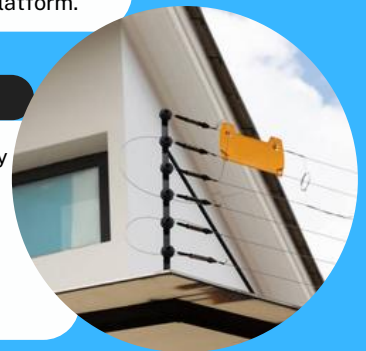
Pepper Spray System

We supply, install, commission and maintain pepper spray for internal building particularly for unauthorised entry to client infrastructure such as stores, substations, pump stations, relay rooms, boreholes e.t.c. We interface the pepper spray system to our own product SSICS (Smart Security Integrating Controller System) to ensure full integration of all security device are on one VMS platform.



Electric fence

A barrier that uses electric shocks to deter animals or people from crossing a boundary or intrusion of infrastructure. We provide top-quality electric fencing solutions that serve as a strong first line of defence, proven to deter potential intruders and enhance property security. Our team specializes in installation, repairs, fault finding and upgrades for all types of electric fencing, ensuring that your system is robust and reliable. We interface the electric fence to our own product SSICS (Smart Security Integrating Controller System) to ensure full integration of all security device are on one VMS platform.



Control Room

24Hrs Control Room monitoring through CCTV surveillance - Human & Vehicle intelligent detection events/alerts - Electric fence tempering events/alerts - Access Control reports - Thermal Perimeter protection alerts - Public address system (remote two way talk platform) - Pepper spray events/alerts - Panic Button alerts - Electrical generator alerts - Door opening alerts - Gas detection alerts - Fire detection alerts - Power grid monitoring - Solar/power backup alarm events/alerts



Our Product (SSASS)



Electrical Generator

We interface the electrical generator to our own product SSICS (Smart Security Integrating Controller System) to ensure full integration of all security device are on one VMS platform. Fuel level, Overheating, Low Battery, Frequency and Water level of the generator is monitored via the SSICS on one VMS platform.

Power Grid

We interface the power grid to our own product SSICS (Smart Security Integrating Controller System) to ensure full integration of all security device are on one VMS platform. TTP assist the client to monitor the power grid via the SSICS on one VMS platform.



Flame Detection



Our flame detectors delivers robust, fast, and reliable detection of flaming fires in a wide range of applications. The range consists of UV, UV/IR and IR3 flame detectors. All utilize sophisticated sensing and signal analysis to detect fires quickly while also rejecting false alarms. With a large field of view it can detect a range of different types of fire including hydrocarbon and non-hydrocarbon sources. We interface all our flame detectors to our own product SSICS (Smart Security Integrating Controller System) to ensure full integration of all security devices are on one VMS platform.

Gas Detection

Remote gas detectors is specifically designed for use with remotely mounted flammable gas sensors. This configuration is ideal for applications where the sensor is required to be mounted remotely from the transmitter in areas where temperatures are well above ambient (up to 150°C/302°F), or that are difficult to access. The transmitter can be mounted at a suitable location away from this area where it is easy to access, view its display and interact with via the user interface. We interface all our gas detectors to our own product SSICS (Smart Security Integrating Controller System) to ensure full integration of all security devices are on one VMS platform.



Door Open Monitoring

We monitor the opening of doors of our clients with the purpose of detecting unauthorized entry to valuable equipment rooms such as stores, substation control room, cash safe, vault, cabinets relay rooms e.t.c. We interface all the doors we monitoring to our own product SSICS (Smart Security Integrating Controller System) to ensure full integration of all security devices are on one VMS platform.



Panic Button

We install panic buttons to quickly alert authorities or designated personnel in an emergency situation, allowing clients to discreetly call for help when they feel threatened or are in danger, typically by sending a silent alarm to the security control room without alerting the potential assailant. We interface all the panic buttons to our own product SSICS (Smart Security Integrating Controller System) to ensure full integration of all security devices are on one VMS platform.



Solar/Power Backup

We specialize in providing cutting-edge solar power solutions through our international partnership. From meticulous designing of custom solutions, seamless installation, complete maintenance, to offering a comprehensive after-sales support structure that caters to the unique needs of Domestic, Commercial and Utility clients. We interface our single phase & three phase inverters to our own product SSICS (Smart Security Integrating Controller System) to ensure full integration of all security devices on one VMS platform.



Our Product (iSafe)

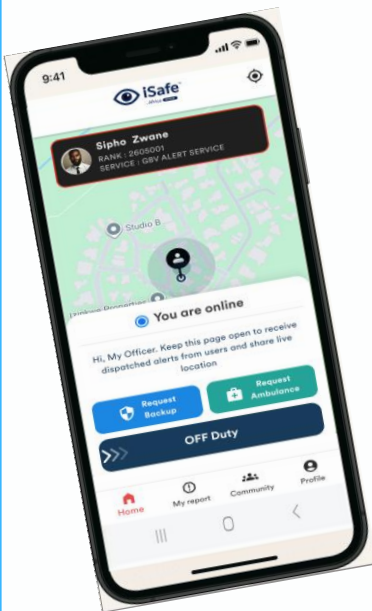


iSafe Community Safety APP

iSafe is a security and emergency response digital platform with technology-driven emergency response and public safety system that enables real-time community reporting of crime, GBV, medical assistance, fire emergency and other community concerns mainly service delivery issues.

Furthermore, the iSafe caters for the community to easily request financial & insurance services such as debt consolidation, credit repair, funeral/life, cover & car insurance at a click of button. It is also a perfect digital platform to request other security technology services such CCTV, Access Control, Electric Fence and Solar/Power Backup system at a click of a button.

iSafe is designed to save lives, reduce response times, improve community safety, report tragedies and service delivery issues through location tracking, instant alerts, and two-way communication.



Community Groups

Users are able to create their own alert groups to receive WhatsApp alerts when users trigger/activate any type of iSafe alerts during emergency situation.

iSafe Community WhatsApp Alert

iSafe Africa

Welcome, Modise
6928, Centurion, Gauteng

PANIC

Your Community. Your Safety. Your Voice.
Digital Platform to Report Emergency and Non-Emergency alerts at a click of a button.

Emergency | Non-Emergency

- Fire Service
- Accident Service
- Medical Service
- GBV Service
- Crime Service
- Municipal Service

Home | Community | New Feed | Payments | Account

Community Members:

- Local Patroller:** Eyes on the street, keeping us safe.
- Neighbour:** Look out for one another.
- Fire Fighter:** Ready to respond, when every second counts.
- Local Patroller:** Visible. Reliable. Together.
- CPF:** Community Policing First.
- Security Officer:** Securing spaces, protecting people.
- Local Councillor:** Listening. Leading. Delivering.
- Colleague:** Stronger together, safer together.
- Family:** Because their safety matters most.
- Friend:** A friend today, a protector always.
- Police Officer:** To protect and to serve.
- Nurse:** Compassion in every call.
- Neighbourhood Watch:** Watching out, standing strong.
- Paramedic:** Care. Respond. Save lives.

- Connect Stay informed.
- Report Speak up.
- Alert Get notified.
- Respond Take action.
- Protect Keep safe.

Your Community. Your Safety. Your Voice.

COMMUNITY MEMBERS

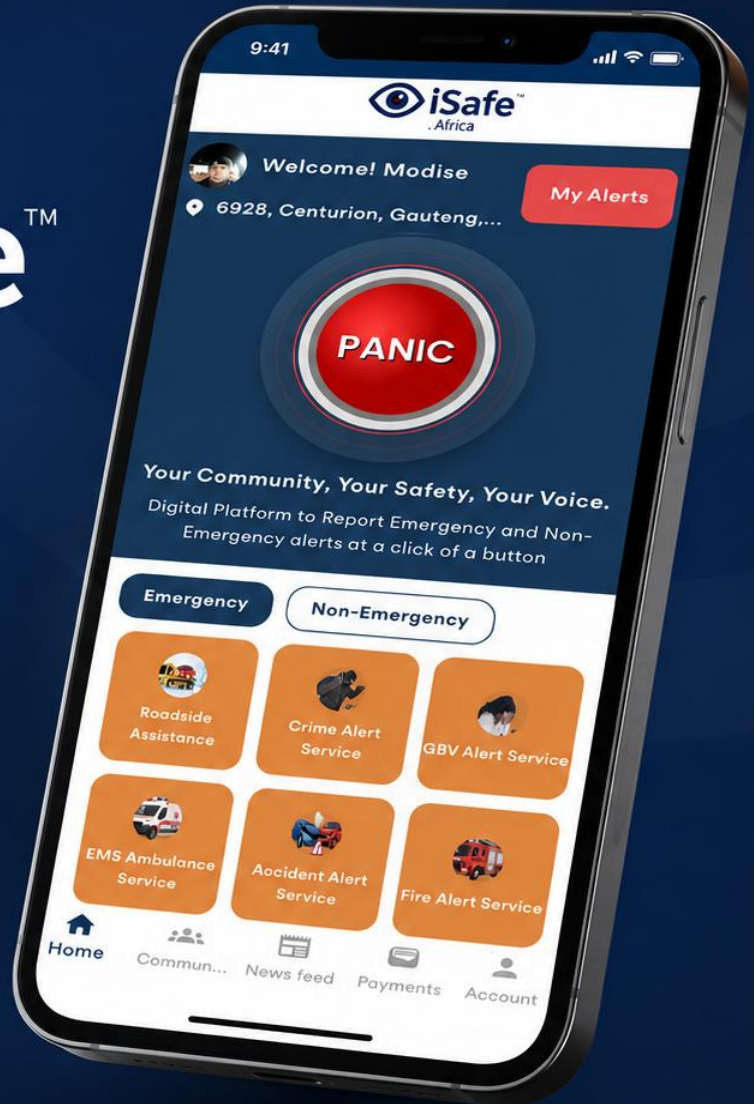
Neighbour | Family | Friend | Colleague | Local Patroller | Local | Security Officer | Local Councillor | Police | Paramedic | Fire Fighter | Community Safety Forum |

iSafe Community Safety APP



Your Community.
Your **Safety**.
Your Voice.

Digital platform to report emergency and non-emergency alerts at a click of a button.



iSafe Emergency Services:

Crime Prevention Response | GBV Prevention Response | EMS Ambulance Response | Fire Emergency Response | Accident Response

Our product iSafe has a strong presence in various Municipalities from provinces such as Limpopo, KZN, Free State & North West to implement iSafe project with the aim of providing a quick and easier digital platform for the community to report/alert the above-mentioned emergency incidents that may occur within the community.



Security Screening Products

“As an Authorized OEM installer, TTP Projects specialize in the supply, Installation and Maintenance of trusted security screening solutions such as X-Ray Machines and Walk Through Metal Detectors. We also offer rental services of security screening equipment to clients as an option.

Security Screening Products:

HIKVISION®

The X-ray intelligent security inspection system combines functions such as extreme display, intelligent recognition, person and package linkage, AI open platform, etc., to better solve the problems of under-detection caused by low concentration, and excessive stress of peak time security check. The product is applicable to scenes such as government agencies, districts, courts, prosecutors, prisons, embassies, factories, schools, hospitals, stadiums, exhibition halls, and entertainment venues. It is used for security check of satchels, parcels, express package, hand baggage and small-sized packages. This quality range of products features tunnel sizes designed to suite every requirement as well as embedded CCTV cameras for enhanced situational awareness



LCD walk through metal detector, adopting advanced electromagnetic compatibility, has high detection sensitivity, strong anti-interference ability. With 33 zones it can accurately locate the position of metal.

alhua TECHNOLOGY

The intelligent security screening machine is a new security inspection device that uses X-ray to quickly inspect baggage and goods without opening packages. Intelligent Security Screening Systems boasting Artificial Intelligence and embedded CCTV cameras for person-package linkage, these high-quality machines provide the best International detection and safety standards. Providing users with an efficient, reliable and high-quality image processing system with large HDD capacity for massive storage of high-definition images, these products are available in a wide range of tunnel sizes and Generator performance.

A high-performance Walk through metal detector. It is light weight and has high metal detection sensitivity, strong anti-interference capabilities and stable performance. The device, made of high-strength special materials, is light-weighted and easy to transport and install.

Designs & Products

Design types:

- Security Interfacing/integrating controller system
- Solar/power backup system
- Network (fibre/LTE) system
- Energy distribution system
- Control & Instrumentation system



MPTS



Tabe Trading & Projects Products:

- Smart Security Integrating Controller System (SSICS)
- Complete Energy Monitoring & Management System (CEMMS)
- Public Hand Wash Station (PHWS)
- Mini Plant Training Station (MPTS)
- iSafe



PHWS



CEMMS



SSICS



Types of targeted Infrastructures

Tabe Trading & Projects offers the integrated security design solutions for the below infrastructures: -

- Electrical Transmission Substations
- Electrical Distribution Substations & Relay Room
- Electrical Distribution Mini Substations
- Railway Lines (Goods & Passenger Rails)
- Network Towers
- Police, Safety Department & Municipalities
- Border Fencing (Perimeter fencing between countries)
- Agricultural Farms, Hospitals & Clinics
- Mines
- Schools, Libraries, Parks, Cemeteries, Office buildings, Stores
- Boreholes, Reservoirs, Pump Stations, Water Treatment Plants



TTP

TABE TRADING & PROJECTS(PTY)LTD
TECHNOLOGIES

Company Compliance



Companies and Intellectual
Property Commission

a member of the dti group



South African Revenue Service



CENTRAL SUPPLIER
DATABASE
FOR GOVERNMENT



labour

Department:
Labour
REPUBLIC OF SOUTH AFRICA



Construction Industry Development Board



the dti

Department:
Trade and Industry
REPUBLIC OF SOUTH AFRICA

BBBEE



PSiRA

Private Security Industry Regulatory Authority



INDEPENDENT COMMUNICATIONS
AUTHORITY OF SOUTH AFRICA



Our Partners



Our Customers





Track Record



| No. | Customer | Project Name | Project Description | Status | Completion Date |
|-----|---|--|---|-------------|-------------------------|
| 1. | Emakhazeni Local Municipality | Appointment letter: Provision of Smart Electrical Metering System | Installation of Energy Monitoring & Management System | Completed | 19/05/2012 |
| 2. | North West Department of Basic Education | Appointment letter: Provision of COVID-19 and hygiene equipment for one NW school | Pilot Project Installation of the Public Hand Wash Stations for Diphetogo Primary School | Completed | 01/06/2020 |
| 3. | Taletso TVET Colleges: Mahikeng Campus, Lichtenburg Campus, Lehurutshe Campus, Lehurutshe Hostel) | Appointment letter: Provision of COVID-19 and hygiene equipment for three Taletso TVET College campuses | Installation of the Public Hand Wash Stations for Mahikeng Campus, Lichtenburg Campus, Lehurutshe Campus, Lehurutshe Hostel | Completed | 30/08/2020 |
| 4. | Taletso TVET Colleges: Mahikeng Campus, Lichtenburg Campus, Lehurutshe Campus, Lehurutshe Hostel) | Appointment letter: Provision of COVID-19 and hygiene equipment for three Taletso TVET College campuses | Maintenance of the Public Hand Wash Stations for Mahikeng Campus, Lichtenburg Campus, Lehurutshe Campus, Lehurutshe Hostel | Completed | 01/06/2012 - 30/11/2021 |
| 5. | Ntlatseng Liquor Outlet (Pty) Ltd | To prevent theft, vandalism & violence at the outlet during day & night shift trading hours | Installation of Closed Circuit Television (CCTV) and mobile alarm system for both indoor and outdoor areas | Completed | 21/01/2022 |
| 6. | Thaba Tsoeu Construction & Plant Hire | To prevent theft and vandalism at the plant during day & night shift trading hours | Installation of Closed Circuit Television (CCTV) and mobile alarm system for both indoor and outdoor areas | Completed | 15/01/2022 |
| 7. | Mjayeli Security Services (Pty) Ltd | Provision of an Outcome-Based Security Solution to Transnet Soc Ltd trading as Transnet Freight Rail at Central Corridor | Installation & Maintenance of an Integrated Security Technology System (CCTV, Access Control, Electric Fence, Pepper spray, Alarm, Solar/power backup, LTE, Data Centre, VMS platform, Videowall, Server, Storage) for the Corridor Substations, Relay Rooms, High Sites, Control Room and the 2300km Railway Line Hotspots | Completed | 01/08/2023 - 30/09/2025 |
| 8. | WIP Investment Forty (Pty) Ltd: NUMSA | Appointment to install CCTV system, Access Control and Security Integrating System | Successful installation of CCTV system, Access control and the security integrating system for our control room for period of 2 months | Completed | 04/06/2025 |
| 9. | Secure Debt Counselling | Appointment letter: Provision of Security CCTV System | Installation of CCTV, access control systems, and non-lethal electric fence for 4 months period | Completed | 29/11/2024 |
| 10. | Raka Energy (Pty) Ltd | Appointment as a contractor for the material supply and site installation of CCTV, access control, alarm system and electric fence in our client at City Power | Installation of CCTV, access control systems, non-lethal electric fence and structured network cabling and re-cabling for 3 months period | Completed | 29/05/2024 |
| 11. | Rand West City Local Municipality | iSafe Community Safety Project | 8000 Users: Implementation of ISAFE platinum package (User APP, Officer APP, 24 Hrs Control Room support, All emergency and financial stakeholders training & commissioning) for 24 months period | In Progress | 23/10/2027 |
| 12. | Secure Debt Investment | iSafe Community Safety Project | 9000 Users: Implementation of ISAFE platinum package (User APP, Officer APP, 24 Hrs Control Room support, All emergency and financial stakeholders training & commissioning) for 12 months period | In Progress | 01/11/2026 |





Get in **Touch**



+27 10 001 7088



info@tpprojects.co.za



www.tpprojects.co.za

www.isafe.africa



Registered Address:

No 2 Centre Road, Morningside,
Sandton, Gauteng, 2057, RSA



Trading Address:

No 286 Pretorius Street, Central Towers
Building, Unit 203, Pretoria, 0007